

RD30Q.1.S系列 - 桥式两侧可打开

Series of RD30Q.1.S - Bridge type open of both side



闭合状态：
Opening type:

- Q** 桥式
Bridge type
- F** 全封闭式
Enclosed
- BF** 半封闭式
Semi-enclosed

注：无字母为普通型
Note: blank means general type

打开方式：
Opening way:

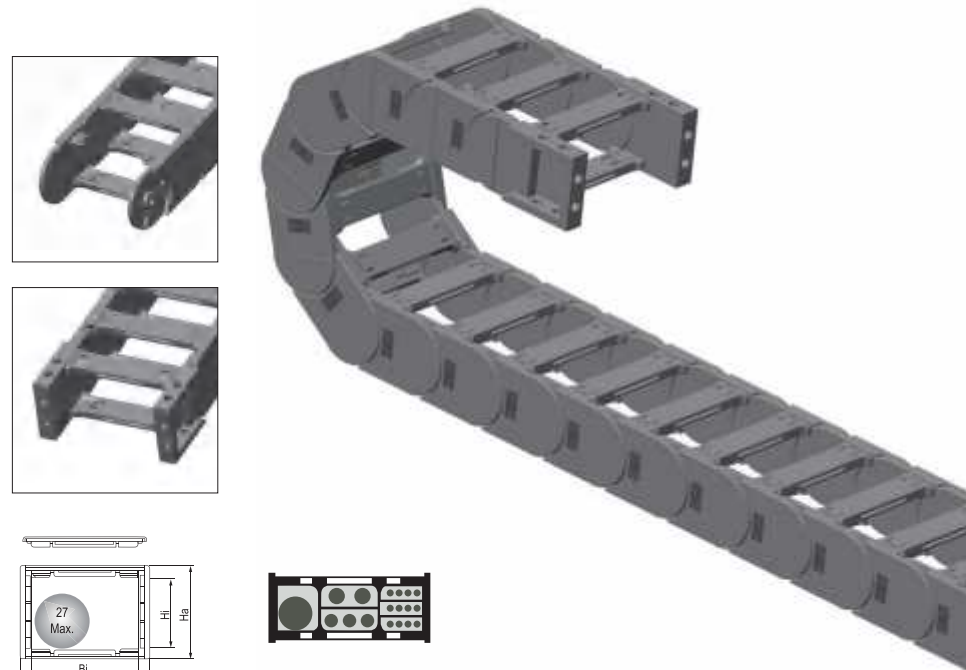
- B** 不可打开
Non-opening
- S** 双侧打开
Open of both side
- W** 外侧打开
Exterior opening
- N** 内侧打开
Interior opening
- F** 无需打开
Without opening

款式：
Style:

- Q.B** 桥式不可打开
Bridge type non-opening
- Q.N** 桥式内侧开
Bridge type interior opening
- Q.W** 桥式外侧开
Bridge type exterior opening
- Q.S** 桥式双侧可打开
Bridge type both side opening
- BF.B** 半封闭不可开
Semi-enclosed non-opening
- BF.N** 半封闭内侧开
Semi-enclosed interior opening
- BF.W** 半封闭外侧开
Semi-enclosed exterior opening
- BF.S** 半封闭双侧开
Semi-enclosed both side opening
- F.N** 封闭内侧开
Enclosed interior opening
- F.W** 封闭外侧开
Enclosed exterior opening
- F.S** 封闭双侧开
Enclosed both side opening

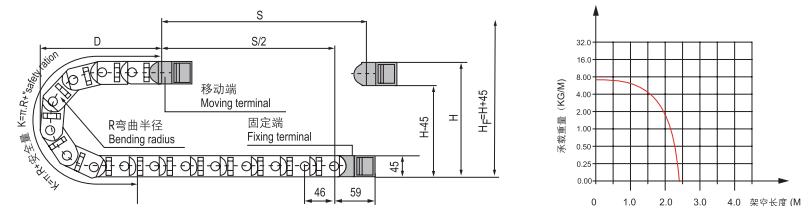
接头类型：
Bracket type:

- X** 斜型接头
Oblique bracket
- F** 方型接头
Square bracket



- ◎ The cable chain tested service life is up to 20 million times.
- ◎ The ledge of cable chain is able to open to inspect or replace cable.
- ◎ The cable chain can be mounted separator and cross separator to divide space and effectively protect cables. (See accessories table)
- ◎ The cable chain is suitable for a diameter of 27mm or less of cable.
- ◎ 测试使用寿命达 2 千万次
- ◎ 可将拖链内外侧挡片打开，方便检查或更换线缆
- ◎ 可装竖隔片、横隔片区分空间，更有效保护线缆（见选配区）
- ◎ 适用于直径 27 毫米以下线缆

主要技术参数 Basic technical data



节距=46mm, 每米节数=22, 链长=S/2+K, S=行程距离, K=π.R+“安全量”

Pitch=46mm, link per meter=22, length of chain=S/2+K, S=stroke. K=π.R+“safety ration”

| R | 75 | 100 | 150 |
|---|-----|-----|-----|
| H | 195 | 245 | 345 |
| D | 144 | 169 | 219 |
| K | 368 | 414 | 598 |

安装实际高度: H₁=H+45mm(负载 1.0kg/m)

Actual mounting height: H₁=H+45mm/load 1.0kg/m

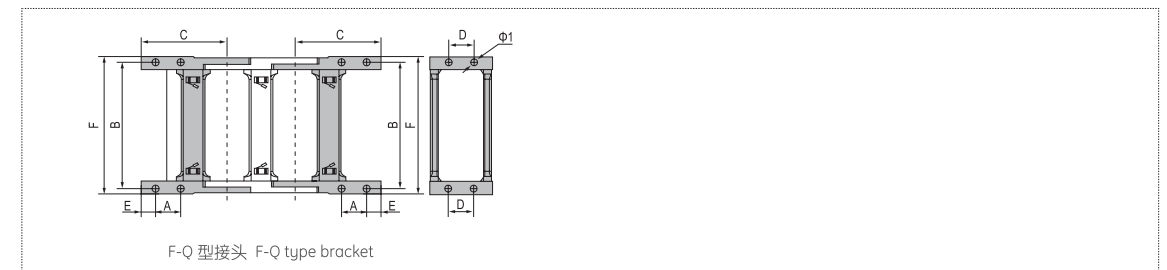
RD30Q.1.S 系列 - 桥式两侧可打开 Series of RD30Q.1.S - Bridge type open of both side



| 系列号 Series No. | 内高 Hi | 内宽 Bi | 外高 Ha | 外宽 Ba | 款式 Styles | 弯曲半径 Bending radius R | 固定接头类型及参数 Bracket type and parameters | | | | | | | | | |
|-------------------|----------|----------|----------|----------|--------------|-----------------------------|---------------------------------------|---------------------------|-----------------------|-----|----|----|----|-----|------------------|--|
| | | | | | | | 可配接头类型 Applicable bracket type | 孔径 Bore diameter φ1 | 孔距 (mm) hole distance | | | | | | 代号 No. | |
| RD30Q.1.38S | 30 | 38 | 45 | 54 | Q.S | 75,100,150 | F-Q | 5.5 | 15 | 50 | 59 | 17 | 13 | 62 | RD30Q.1.38S-FJT | |
| RD30Q.1.50S | 30 | 50 | 45 | 66 | Q.S | | F-Q | 5.5 | 15 | 62 | 59 | 17 | 13 | 74 | RD30Q.1.50S-FJT | |
| RD30Q.1.57S | 30 | 57 | 45 | 73 | Q.S | | F-Q | 5.5 | 15 | 69 | 59 | 17 | 13 | 81 | RD30Q.1.57S-FJT | |
| RD30Q.1.60S | 30 | 60 | 45 | 76 | Q.S | | F-Q | 5.5 | 15 | 72 | 59 | 17 | 13 | 84 | RD30Q.1.60S-FJT | |
| RD30Q.1.75S | 30 | 75 | 45 | 91 | Q.S | | F-Q | 5.5 | 15 | 87 | 59 | 17 | 13 | 99 | RD30Q.1.75S-FJT | |
| RD30Q.1.77S | 30 | 77 | 45 | 93 | Q.S | | F-Q | 5.5 | 15 | 89 | 59 | 17 | 13 | 101 | RD30Q.1.77S-FJT | |
| RD30Q.1.100S | 30 | 100 | 45 | 116 | Q.S | | F-Q | 5.5 | 15 | 112 | 59 | 17 | 13 | 124 | RD30Q.1.100S-FJT | |
| RD30Q.1.103S | 30 | 103 | 45 | 119 | Q.S | | F-Q | 5.5 | 15 | 115 | 59 | 17 | 13 | 127 | RD30Q.1.103S-FJT | |
| RD30Q.1.125S | 30 | 125 | 45 | 141 | Q.S | | F-Q | 5.5 | 15 | 137 | 59 | 17 | 13 | 149 | RD30Q.1.125S-FJT | |

注：S 表示两侧可打开
Note: S indicates that the both side open

固定接头类型及参数 Fix bracket type and parameters (见表格 See table)



订货示例 Order Sample

示例 拖链内高 30mm、内宽 38mm、半径 75mm、长度 1 米 /22 节 (Sample: inner height 30mm, inner width 38mm, radius 75mm, length 1 meter /22 links)

拖链 Chain RD30Q.1.38S R75 1000mm /22 Links

接头 Bracket RD30Q.1.38S-XJT 副 (Set)

配件 Accessories 每节装 1 个竖隔片 / 1 个横隔片 (1 vertical shim/1 horizontal shim can be mounted in every link)

注：可根据客户要求定制各种规格。 Note: Various sizes can be customized according to customer requirements.